



CAN-PC104/200

PC/104-Interface with three CAN-Controllers

- Low cost PC/104 to CAN interface
- Easy to use for evaluation and starter kits.

CAN Interface Board for PC104

The module CAN-PC104/200 is an 8-bits-plug-in board designed for the PC/104 bus. It is equipped with the three major CAN controllers – Intel 8257, Siemens 81C91, and Phillips SJA1000 each representing the FULL or BASIC CAN operation mode to meet the user's individual requirements.

CAN Interface

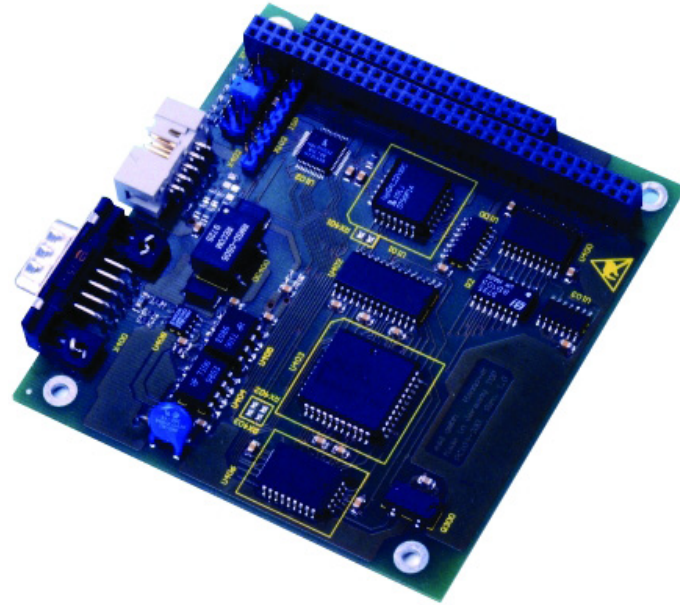
The fully ISO 11898 compliant CAN interface allows a data transfer rate of 1 Mbit/s, and the CAN interface is opto-isolated.

Real Time Software Support

The board is supported with VxWorks drivers for each CAN controller on CAN layer 2 access. Some C sample code for initialization, setting of the CAN baud rate and application oriented CAN read and write commands are included.

Other Software

Software drivers are available for Windows, Linux, VxWorks, Solaris, and QNX. Data reception depends on the bitrate, the performance and the operating system of the host CPU.



CAN-PC104/200

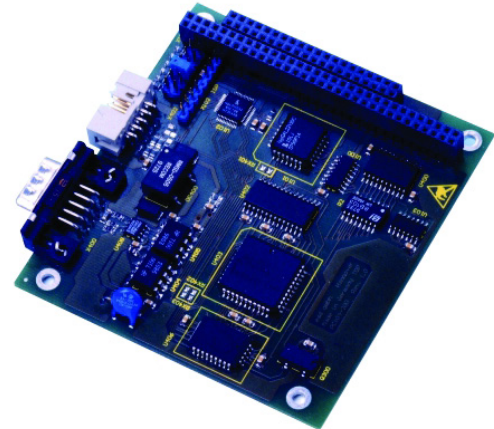
For further information please visit
http://www.esd-electronics-usa.com/CAN_PC104_Interfaces.html

growing with the
challenge

CAN-PC104/200

PC/104-Interface with three CAN-Controllers

- Low cost PC/104 to CAN interface
- Easy to use for evaluation and starter kits.



CAN-PC104/200

For further information please visit
http://www.esd-electronics-usa.com/CAN_PC104_Interfaces.html

Technical Specifications

PC104 interface	
PC104 interface	Data: 8 bit, IRQ: 1 of 12
CAN bus	
CAN controllers	Phillips SJA1000, Intel 82527, and Siemens 81C91
General	
Temperature	0...50o C
Humidity	Max. 90%, non-condensing
Supply voltage	5 VDC
Connector	CAN 9-pole DSUB (male) DeviceNet: 5-pole connector

Order information

Designation		order no.
CAN-PC104/200-1	1x CAN, 3 controllers	C.2013.02
CAN-PC104/200-P	1x CAN, only Phillips SJA1000	C.2013.04
CAN-PC104/200I	1x CAN, only Intel 82527	C.2013.05
CAN-PC104/200S	1X CAN, only Siemens 81C91	C.2013.06
Licenses		
CAN-DRV-LCD	Object license for Windows & Linux w/CD-ROM	C.1101.02
CAN-PC104/200-VxW	VxWorks CAN-API object license	C.2013.55
CAN-PC104/200-QNX4	QNX4 CAN-API object license	C.2013.32
CAN-PC104/200QNX6	QNX6 CAN-API object license	C.2013.33
CAN-PC104/200-Co	CANopen object license	C.2013.12
Manual		
CAN-PC104/200-ME	Hardware manual	C.2013.21
CAN-API-ME	Software manuals for CAN-API & SOD-API	C.2001.21
CAL/CANopen-ME	CANopen manuals	C.2002.21

